



Cyber-shot

Choose Your Cyber-shot

S series - Easy to Use and Stamina Performance

Shoot all you want with the Cyber-shot S600. With STAMINA performance for up to 460 shots, you'll never have to worry about missing a shot again. Plus this affordable camera includes some impressive features, such as a Carl Zeiss Vario-Tessar lens, High ISO Sensitivity, Clear RAW Noise Reduction, Real Imaging Processor, Wide Angle Shooting and quality VGA (640x480) MPEG movie recording. The S series is your perfect start to digital still photography.

W series - Unbelievable Clarity & Sharpness in Every Shot

From the 6 Mega Pixel W30 through to the 8.1 Mega Pixel W100, the W series delivers beautifully sharp image quality and true-to-life colours, even when your subject is moving quickly or under low-light conditions.

The W series also incorporates an On-Screen Display Guide that pops up with relevant information on various features to make your camera even easier to use (see page 56 for more information). W30 and W50 cameras are the only compact Cyber-shots to feature a full range of accessories such as Tele and Wide Conversion Lenses, for even more versatility.

H & R series - Sharp and Stunning Images Up Close

For the budding professional photographer, the H2, H5 and R1 Cyber-shot cameras offer a powerful zoom and highly customisable features. The H series has an exceptional 12x Optical Zoom for matchless clarity at any distance, and is available in 6.0 (H2) or 7.2 (H5) Mega Pixel. The R1 has a high quality Carl Zeiss Vario Sonnar T* lens, CMOS Sensor, High Sensitivity of up to ISO 3200, and up to 10 Mega Pixel image resolution.



T & N series - Stylish and Powerful

Sony's T10, T50 and N2 cameras offer the ultimate in compact digital photography.

T series cameras utilise Double Anti-Blur technology, Super SteadyShot, an Optical Image Stabiliser, and High ISO Sensitivity to reduce blurring (a feature that's especially useful in dark environments or when shooting fast moving action). The 7.2 Mega Pixel T10 is available in Silver, Black, White and Pink while the 7.2 Mega Pixel T50 comes in Black, Silver and Red. The T50 also features a 3.0" Touch Screen so you can control your focus area with greater precision and even personalise your images with the Paint function.

The 10.1 Mega Pixel N2 is available in a unique champagne colour and shares the same Touch Screen features as the T50.

Accessorise Your Cyber-shot

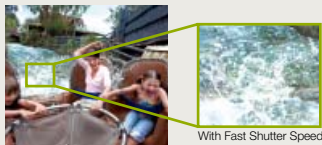
From carry cases to sports housings, Sony offers a wide range of accessories to complement and make the most of your Cyber-shot camera. You can even keep track of exactly where you took your photos with the GPSCS1 and Picture Motion Browser – see page 71 for more details.



For the ultimate in digital photography, don't miss our new **α100** in the Digital SLR section, starting from page 45.

HIGH ISO SENSITIVITY

All of this season's Cyber-shot models have High ISO Sensitivity settings up to ISO1000, meaning they can be adjusted to be more sensitive to light. So, you can enjoy taking pictures with your Cyber-shot under low light conditions or capturing moving subjects with fast shutter speeds without the blur.



With Fast Shutter Speed

Fast shutter speed – freeze fast and slow moving subjects in precise clarity.



Without High Sensitivity

With High Sensitivity

Brightens both background and foreground in low-light conditions without using flash.



No Flash

Up to 2.4m or 7.2m at ISO1000 with Flash

Extends flash distance when using flash.

CLEAR RAW NR

(Noise Reduction)

A higher ISO setting, however, can result in increased image noise and reduced detail. The innovative Clear RAW NR feature is a powerful algorithm unique to Sony which intelligently reduces image noise.



Without Clear RAW NR

With Clear RAW NR

Cyber-shot



DSC600



DSC600

DSC600 CYBER-SHOT

- 6.0 Mega Pixel Super HAD CCD
- Real Imaging Processor
- Carl Zeiss Vario-Tessar lens
- Zoom: 3x Optical; 6x Digital; Up to 13x Smart Zoom
- 2.0" LCD
- Optical Viewfinder
- High Sensitivity: Up to ISO 1000 with Clear RAW NR (Noise Reduction)
- MPEG Movie VX Fine: 640x480, 30fps continuous recording
- Memory Stick Duo / PRO Duo
- 32MB Internal Memory
- AA Batteries, stamina battery life: 230 mins/460 shots (with optional NHAA2DB)
- Slide Show
- PictBridge direct printing



DSCW30S

DSCW30L

DSCW30W



DSCW30S

DSCW30 CYBER-SHOT

- 6.0 Mega Pixel Super HAD CCD
- Real Imaging Processor
- Carl Zeiss Vario-Tessar lens
- Zoom: 3x Optical; 6x Digital; Up to 13x Smart Zoom
- 2.0" LCD
- Optical Viewfinder
- High Sensitivity: Up to ISO 1000 with Clear RAW NR (Noise Reduction)
- MPEG Movie VX Fine: 640x480, 30fps continuous recording
- Memory Stick Duo / PRO Duo
- 32MB Internal Memory
- ▲ NPBG1 Lithium Ion Battery, Battery Life Approx. 200 mins/400 shots
- Slide Show
- PictBridge direct printing
- ▲ Icon & Function Guide
- Compatible Sports Housing SPKWA

DSCW30: Available in Silver (DSCW30S), Blue (DSCW30L) or White (DSCW30W)

Cyber-shot Accessories



ACCCN3TR
Starter Kit for DSC600



ACCCBG
Starter Kit for W series and DSCN2



ACCSHA
Shooting Accessory Kit for Cyber-shot

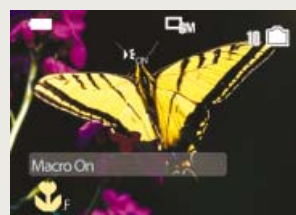
MODE GUIDE

The Mode Guide gives a brief description of different shooting modes allowing you to easily choose the ideal mode for the subject or shooting environment.



ICON GUIDE

The Icon Guide gives a brief feature description of function icons meaning you can identify settings at a glance giving you greater control over settings in response to shooting needs and conditions.



FUNCTION GUIDE

The Function Guide gives convenient on-screen guides and tips. For example, it tells you how many shots you can take and the maximum print sizes possible based on the selected image resolution.



▲ Denotes 'Step-Up' Feature



DSCW50 CYBER-SHOT

- 6.0 Mega Pixel Super HAD CCD
- Real Imaging Processor
- Carl Zeiss Vario-Tessar lens
- Zoom: 3x Optical; 6x Digital; Up to 13x Smart Zoom
- ▲ 2.5" LCD
- Optical Viewfinder
- High Sensitivity: Up to ISO 1000 with Clear RAW NR (Noise Reduction)
- MPEG Movie VX Fine: 640x480, 30fps continuous recording
- Memory Stick Duo / PRO Duo
- 32MB Internal Memory
- NPBG1 Lithium Ion Battery, Battery Life Approx. 195 mins/390 shots
- Slide Show
- PictBridge direct printing
- Icon & Function Guide
- Compatible Sports Housing SPKWA

DSCW50: Available in Black (DSCW50B) or Silver (DSCW50S)



DSCW100 CYBER-SHOT

- ▲ 8.1 Mega Pixel Super HAD CCD
- Real Imaging Processor
- Carl Zeiss Vario-Tessar lens
- Zoom: 3x Optical; 6x Digital; Up to 15x Smart Zoom
- 2.5" LCD
- Optical Viewfinder
- ▲ High Sensitivity: Up to ISO 1250 with Clear RAW NR (Noise Reduction)
- ▲ Manual Exposure Mode
- MPEG Movie VX Fine: 640x480, 30fps continuous recording
- Memory Stick Duo / PRO Duo
- ▲ 64MB Internal Memory
- NPBG1 Lithium Ion Battery, Battery Life Approx. 180 mins/360 shots
- Slide Show
- PictBridge direct printing
- Icon & Function Guide

Available in Black (DSCW100B) or Silver (DSCW100S)



SPKWA

Splash proof housing to protect your DSCW30/50 in the surf, at the beach, or on the snow. Useable up to 3 metres.



DPPFP55

Digital photo printer



VCLDH0730

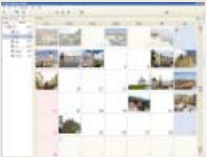
Wide conversion lens 0.7x for DSCW30/50

PICTURE MOTION BROWSER

Sony's new photo viewing software means enjoying your digital photos has never been easier.

Calendar View

Totally intuitive and easy to use, it doesn't matter how the images have been saved onto your computer – with Calendar View, you can see exactly when your photos were taken by year, month and even the exact time of day.



Calendar View

Map View

With the optional GPSCS1 accessory, you can now see exactly where your images were taken using Google Maps and Google Earth.



Map View



Satellite View

SUPER STEADYSHOT

To compensate for inevitable camera shaking when shooting without a tripod, T series Cyber-shot models incorporate Sony's "Super SteadyShot" Optical Image Stabiliser, which uses built-in gyro sensors to detect camera shake and corrects it with a shift lens, meaning you can count on clear, beautiful images every time you shoot.



Super SteadyShot off



Super SteadyShot on

Cyber-shot



DSCT10B

DSCT10P

DSCT10W

DSCT10S

DSCT10S

DSCT10 CYBER-SHOT

- 7.2 Mega Pixel Super HAD CCD
 - Real Imaging Processor
 - Carl Zeiss Vario-Tessar lens
 - Zoom: 3x Optical; 6x Digital; Up to 14x Smart Zoom
 - ▲ 2.5" Clear Photo Plus LCD
 - ▲ Super SteadyShot
 - High Sensitivity: Up to ISO 1000 with Clear RAW NR (Noise Reduction)
 - MPEG Movie VX Fine: 640x480, 30fps continuous recording
 - Memory Stick Duo / PRO Duo
 - 56MB Internal Memory
 - ▲ NPFT1 infoLITHIUM Battery, Battery Life Approx. 125 mins/250 shots
 - ▲ Slide Show with Music and Effects
 - PictBridge direct printing
 - Icon and Function Guide
 - Compatible Sports Housing SPKTHC/Marine Housing MPKTHC
- Available in Black (DSCT10B), White (DSCT10W), Silver (DSCT10S) or Pink (DSCT10P)

Cyber-shot Accessories



SPKTHC

Splash proof housing to protect your DSCT10 in the surf, at the beach, or on the snow. Useable up to 3 metres underwater



MPKTHC

Marine Housing for DSCT10. Useable up to 40 metres underwater



GPSCS1

GPS unit to add location information to your photos



DSCT50 CYBER-SHOT

- 7.2 Mega Pixel Super HAD CCD
- Real Imaging Processor
- Carl Zeiss Vario-Tessar lens
- Zoom: 3x Optical; 6x Digital; Up to 14x Smart Zoom
- ▲ 3.0" Hybrid Clear Photo Plus LCD
- ▲ Touch Screen
- ▲ Paint & Direct Operation
- Super SteadyShot
- High Sensitivity: Up to ISO 1000 with Clear RAW NR (Noise Reduction)
- MPEG Movie VX Fine: 640x480, 30fps continuous recording
- Memory Stick Duo / PRO Duo
- 56MB Internal Memory
- NPFR1 infoLITHIUM Battery, Battery Life Approx. 200 mins/400 shots
- Slide Show with Music and Effects
- PictBridge direct printing
- Icon and Function Guide

Available in Black (DSCT50B), Silver (DSCT50S) & Red (DSCT50R)



DSCN2 CYBER-SHOT

- ▲ 10.1 Mega Pixel Super HAD CCD
- Real Imaging Processor
- Carl Zeiss Vario-Tessar lens
- Zoom: 3x Optical; 6x Digital; Up to 17x Smart Zoom
- 3.0" Hybrid Clear Photo Plus LCD
- Touch Screen
- Paint & Direct Operation
- ▲ High Sensitivity: Up to ISO 1600 with Clear RAW NR (Noise Reduction)
- MPEG Movie VX Fine: 640x480, 30fps continuous recording
- Memory Stick Duo / PRO Duo
- 25MB Internal Memory
- NPBG1 Lithium Ion Battery, Battery Life Approx. 150 mins/300 shots
- Slide Show with Music and Effects
- PictBridge direct printing
- Icon and Function Guide
- Compatible Marine Housing MPKNA

TOUCH SCREEN



Now it's even easier to manage and edit your pictures on the T50 or N2 with the Intelligent Touch Panel. Using your fingertip or the supplied stylus, easily navigate the various functions such as choosing a focal point in the Free Spot Auto Focus function, or playing back your slide shows and movies.

PAINT



Have fun and personalise your images using the Paint function, which enables you to write text, add stamps or trace shapes onto your images, which can then be saved separately from the original photo.

SLIDE SHOW

With Music and Effects



Bring your photos to life in a dynamic slideshow complete with music and transition effects – you can even import your own soundtrack using the supplied Music Transfer software.



VCTR100
Compact Tripod for Cyber-shot
and Handycam



MPKNA
Marine housing for DSCN2
Operational depth 40m



HVLRLS
Ring light for macro shooting

Cyber-shot



DSC-H2

DSC-H2 CYBER-SHOT

- 6.0 Mega Pixel Super HAD CCD
- Real Imaging Processor
- Carl Zeiss Vario-Tessar lens
- ▲ Zoom: 12x Optical; 24x Digital; Up to 52x Smart Zoom
- 2.0" LCD
- ▲ Electrical Viewfinder
- Super SteadyShot
- High Sensitivity: Up to ISO 1000 with Clear RAW NR (Noise Reduction)
- Manual Exposure Mode
- ▲ Dynamic Range Expansion
- MPEG Movie VX Fine: 640x480, 30fps continuous recording
- Memory Stick Duo / PRO Duo
- 30MB Internal Memory
- AA Batteries, Stamina Battery Life: 200 mins/400 shots (with optional NHAA2DB)
- Slide Show
- PictBridge direct printing
- Icon & Function Guide



DSC-H5B

DSC-H5B CYBER-SHOT

- ▲ 7.2 Mega Pixel Super HAD CCD
- Real Imaging Processor
- Carl Zeiss Vario-Tessar lens
- Zoom: 12x Optical; 24x Digital; Up to 57x Smart Zoom
- ▲ 3.0" Hybrid Clear Photo Plus LCD
- Electrical Viewfinder
- Super SteadyShot
- High Sensitivity: Up to ISO 1000 with Clear RAW NR (Noise Reduction)
- Manual Exposure Mode
- Dynamic Range Expansion
- MPEG Movie VX Fine: 640x480, 30fps continuous recording
- Memory Stick Duo / PRO Duo
- 30MB Internal Memory
- AA Batteries, Stamina Battery Life: 150 mins/300 shots (with optional NHAA2DB)
- Slide Show
- PictBridge direct printing
- Icon & Function Guide



DSC-R1

DSC-R1 CYBER-SHOT

- ▲ 10.3 Mega Pixel CMOS
- Real Imaging Processor
- ▲ Carl Zeiss Vario-Sonnar T* lens
- Zoom: 5x Optical; 10x Digital; Up to 15x Smart Zoom
- ▲ 2.0" Free Angle LCD
- Electrical Viewfinder
- ▲ High Sensitivity: Up to ISO 3200 with Clear RAW NR (Noise Reduction)
- Manual Exposure Mode
- Memory Stick PRO & Duo / PRO Duo (with MSACM2 adaptor)
- NPFM50 infoLITHIUM Battery, Battery Life Approx. 230 mins/460 shots
- Slide Show
- PictBridge direct printing